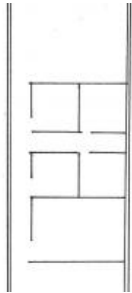




**29 Hotham St, Traralgon**



### PRIME LOCATION - PLUSH EXTENSIVE OFFICE FIT-OUT

- \* Approx 170m<sup>2</sup> property opposite Council's multi-storey car-park & with ANZ & Westpac as near neighbours
- \* Rear of this property allows for Advertising facing the Princes Highway
- \* Historically this has been utilised as offices but would suit Retail too
- \* Excellent modern building; excellent modern fit-out

The above information provided has been furnished to us by the vendor/s. We have not verified whether or not that information is accurate and do not have any belief in one way or the other in its accuracy. We do not accept any responsibility to any person for its accuracy and do no more than pass it on. All interested parties should make and rely upon their own inquiries in order to determine whether or not this information is in fact accurate.

<b>Price</b>	\$50,000pa + GST + Outgoings
<b>Property Type</b>	commercial
<b>Property ID</b>	2342
<b>Office Area</b>	170 m2

### Agent Details

Ted Addison - 0427 512 378

### Office Details

Traralgon  
61 Hotham Street Traralgon VIC 3844  
Australia  
0351747111

